



[www.protem.fr](http://www.protem.fr)

Certification N° 667 E





# PROTEM

A CUT ABOVE THE REST



## PROTEM

A CUT ABOVE THE REST

Manufacturer of Welding and Machining Equipment



[www.protem.fr](http://www.protem.fr)

Z.I. les Bosses  
26800 Etoile-sur-Rhône / FRANCE  
tél. +33 (0)4 75 57 41 41



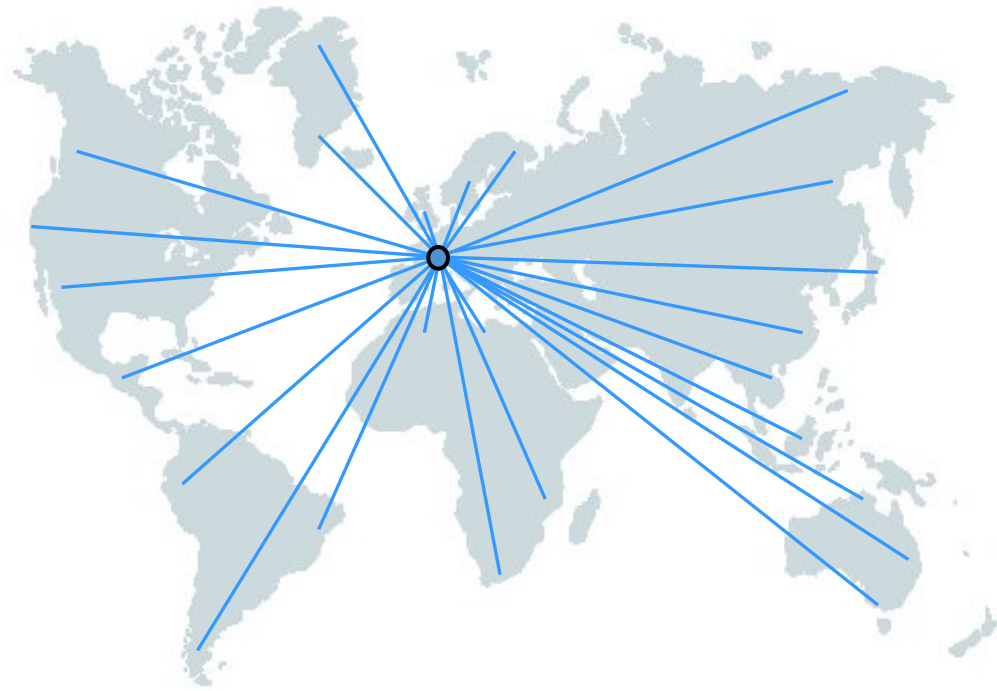
Certification N° 667 E





# PROTEM

A CUT ABOVE THE REST



*PROTEM worldwide*

Certification N° 667 E





# PROTEM

A CUT ABOVE THE REST

## PROTEM – Manufacturer of Welding and Machining Equipment

- PROTEM is located in Etoile sur Rhône in the Rhône Valley.
- Established in 1980.
- Group composed of:

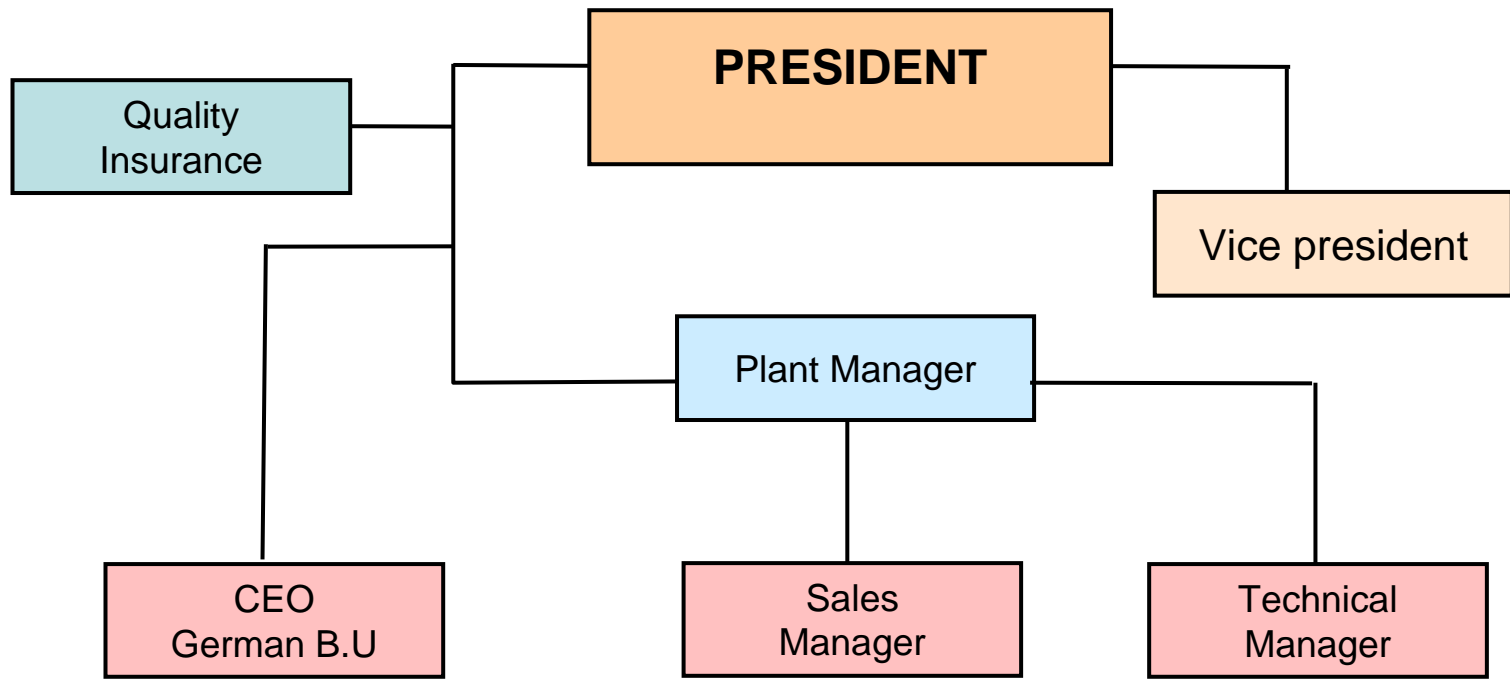
- **AGPI SAS**
- **PROTEM SAS**
- **PROTEM GMBH**
- **SERCO SAS**
- **AUXILIAR NUCLEAR SL**
- **R&D**



# PROTEM

A CUT ABOVE THE REST

## MANAGEMENT ORGANISATION CHART





# PROTEM

A CUT ABOVE THE REST

## Activity

### OIL & GAS INDUSTRY:

- ACERGY (UK)
- AKER
- BP (UK)
- CAMERON (FR)
- GAMA (TR)
- GAZPROM (RU)
- GLOBAL (USA)
- QATAR PETROLEUM
- SAIPEM (IT)
- SERIMAX
- SUBSEA 7
- TECHNIP (FR)
- TEKFEN (TR)
- TOTAL (FR)
- Etc.

### CONVENTIONAL INDUSTRY:

- ANSALDO (IT)
- BALCKE/MARLEY (D)
- BASF (D)
- DMV (FR)
- DSME (K)
- ENDEL (FR)
- HDW (D)
- JARO (FIN)
- KHS (D)
- KRONES (D)
- LIEBHERR (FR/D)
- US NAVY (USA)
- VALCOVNY (SLO)
- VILMAR (DESNOYER) (RO)
- SIEMENS (D)
- TUBETECH (USA)
- VALLOUREC (FR)
- Etc.



# PROTEM

A CUT ABOVE THE REST

## *Activity*

### NUCLEAR INDUSTRY:

- AREVA (FR)
- CEA (FR)
- CEN SCK (B)
- BILFINGER (D)
- DCNS FR)
- EDF (FR)
- EISA (ARG)
- ENBW (D)
- ENSA (SP)
- ENRESA (SP)
- EON (D)
- FORSCHUNGSZENTRUM KIT (D)
- NAEK/ARS (UA)
- NASA (ARG)
- ONET (FR)
- RWE (D)
- ROZENERGOATOM (RU)
- TECHINT (ARG)
- WESTINGHOUSE (D/USA)
- VUJE (SLO)
- Etc.



# PROTEM

A CUT ABOVE THE REST

- **30 years of experience** in the design of welding and machining equipment able to work under hazardous conditions.
- **The group** is made of units with the necessary **know how** for the engineering, manufacturing, machining, welding and on site interventions
- **Teams** composed of engineers, in all fields as well as machining, welding, metallurgy, automation, hydraulic.







# PROTEM

A CUT ABOVE THE REST

- **A flexibility** allowing the project management within the required time limits but also in situations of emergency.
- **The company management** according to, among others, the following standards and certification : ISO 9001 V2008, CEFRI-E, 85114 UTO, CAEAR fields D3.2 and D4.2<sup>E</sup>.
- **PROTEM** has a strategy of **sustainable** development and has been using an average of 10% of its yearly turnover during the last decade in R&D.
- **The acknowledgement of its know how** by the majors of the industry and also by the French government : Ministry of Defense innovation prize for the development of a production welding unit of nuclear submarines hulls (MIG Narrow Gap patented process).





# PROTEM

A CUT ABOVE THE REST

## OIL & GAS DEPARTMENT



## STANDARD MACHINES DEPARTMENT



## SPECIAL MACHINES DEPARTMENT



## NUCLEAR DEPARTMENT





# PROTEM

A CUT ABOVE THE REST

## Oil / Gas 40% of the activity

<b>CONSTRUCTION</b> 75% of the activity	<b>DECOMMISSIONING</b> 5% of the activity	<b>MAINTENANCE</b> 20% of the activity
--	--	---

<b>REFINERIES</b> 40% of the activity	<b>PRODUCTION</b> 60% of the activity
--	--

<b>WELDING</b> 35% of the activity	<b>MACHINING</b> 65% of the activity
---------------------------------------	---





# PROTEM

A CUT ABOVE THE REST

## *PREFAB Range*

### US-HSB Series

O-HSB-C

CTA Series

BB Series

TNO Series

US600R

US Series

TT Clamshells

### US- High Speed Beveler Series





# PROTEM

A CUT ABOVE THE REST

## *PREFAB Range*

### US- High Speed Beveler Series

#### **US-HSB Series**

---

O-HSB-C

CTA Series

BB Series

TNO Series

US600R

US Series

TT Clamshells





# PROTEM

A CUT ABOVE THE REST

## *PREFAB Range*

### US- High Speed Beveler Series

### US-HSB Series

O-HSB-C

CTA Series

BB Series

TNO Series

US600R

US Series

TT Clamshells





# PROTEM

A CUT ABOVE THE REST

## *PREFAB Range*

### Outside Clamping High Speed Beveler

US-HSB Series

**O-HSB-C**

---

CTA Series

BB Series

TNO Series

US600R

US Series

TT Clamshells





# PROTEM

A CUT ABOVE THE REST

## *PREFAB Range*

Outside Clamping High Speed Beveler

US-HSB Series

**O-HSB-C**

---

CTA Series

BB Series

TNO Series

US600R

US Series

TT Clamshells



Certification N° 667 E







# PROTEM

A CUT ABOVE THE REST

## *PREFAB Range*

### Outside Clamping Cutting & Beveling Machine

US-HSB Series

O-HSB-C

**CTA Series**

---

BB Series

TNO Series

US600R

US Series

TT Clamshells





# PROTEM

A CUT ABOVE THE REST

## *PREFAB Range*

Outside Clamping Cutting & Beveling Machine

US-HSB Series

O-HSB-C

**CTA Series**

---

BB Series

TNO Series

US600R

US Series

TT Clamshells





# PROTEM

A CUT ABOVE THE REST

## *PREFAB Range*

## Beveling Bench Series

US-HSB Series

O-HSB-C

CTA Series

**BB Series**

---

TNO Series

US600R

US Series

TT Clamshells





# PROTEM

A CUT ABOVE THE REST

## *PREFAB Range*

### Beveling Bench Series

US-HSB Series

O-HSB-C

CTA Series

**BB Series**

---

TNO Series

US600R

US Series

TT Clamshells





# PROTEM

A CUT ABOVE THE REST

## *PREFAB Range*

US-HSB Series

O-HSB-C

CTA Series

BB Series

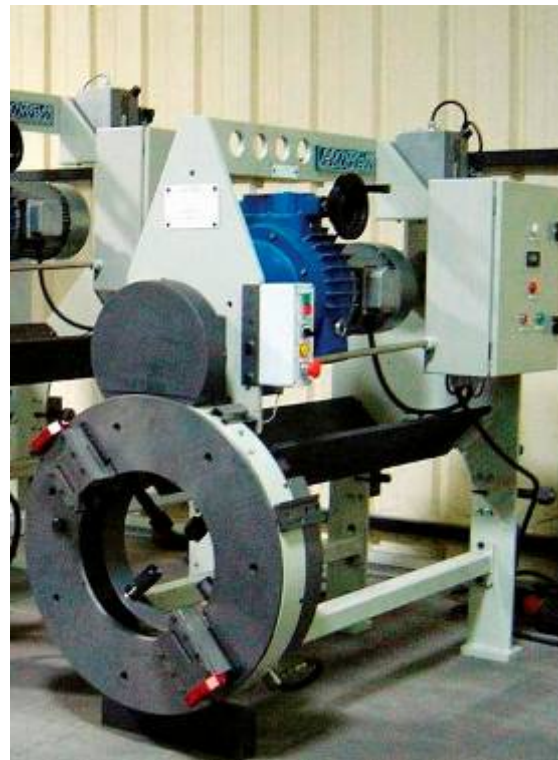
**TNO Series**

---

US600R

US Series

TT Clamshells



Cutting & Beveling Machines



# PROTEM

A CUT ABOVE THE REST

## *PREFAB Range*

### Cutting & Beveling Machines

US-HSB Series

O-HSB-C

CTA Series

BB Series

**TNO Series**

US600R

US Series

TT Clamshells





# PROTEM

A CUT ABOVE THE REST

## *PREFAB Range*

### Cutting & Beveling Machines

US-HSB Series

O-HSB-C

CTA Series

BB Series

**TNO Series**

---

US600R

US Series

TT Clamshells





# PROTEM

A CUT ABOVE THE REST

## *PREFAB Range*

US-HSB Series

O-HSB-C

CTA Series

BB Series

TNO Series

**US600R**

---

US Series

TT Clamshells



High Speed Beveler





# PROTEM

A CUT ABOVE THE REST

## *PREFAB Range*

US-HSB Series

O-HSB-C

CTA Series

BB Series

TNO Series

US600R

**US Series**

---

TT Clamshells

US Series





# PROTEM

A CUT ABOVE THE REST

## *PREFAB Range*

US-HSB Series

O-HSB-C

CTA Series

BB Series

TNO Series

US600R

**US Series**

---

TT Clamshells

US Series



Certification N° 667 E





# PROTEM

A CUT ABOVE THE REST

## *PREFAB Range*

TT Clamshells

US-HSB Series

O-HSB-C

CTA Series

BB Series

TNO Series

US600R

US Series

TT Clamshells





# PROTEM

A CUT ABOVE THE REST

## *PREFAB Range*

### TT Clamshells

US-HSB Series

O-HSB-C

CTA Series

BB Series

TNO Series

US600R

US Series

**TT Clamshells**





# PROTEM

A CUT ABOVE THE REST

## *PREFAB Range*

US-HSB Series

O-HSB-C

CTA Series

BB Series

TNO Series

US600R

US Series

**TT Clamshells**

TT Clamshells





# PROTEM

A CUT ABOVE THE REST

## *PREFAB Range*

US-HSB Series

O-HSB-C

CTA Series

BB Series

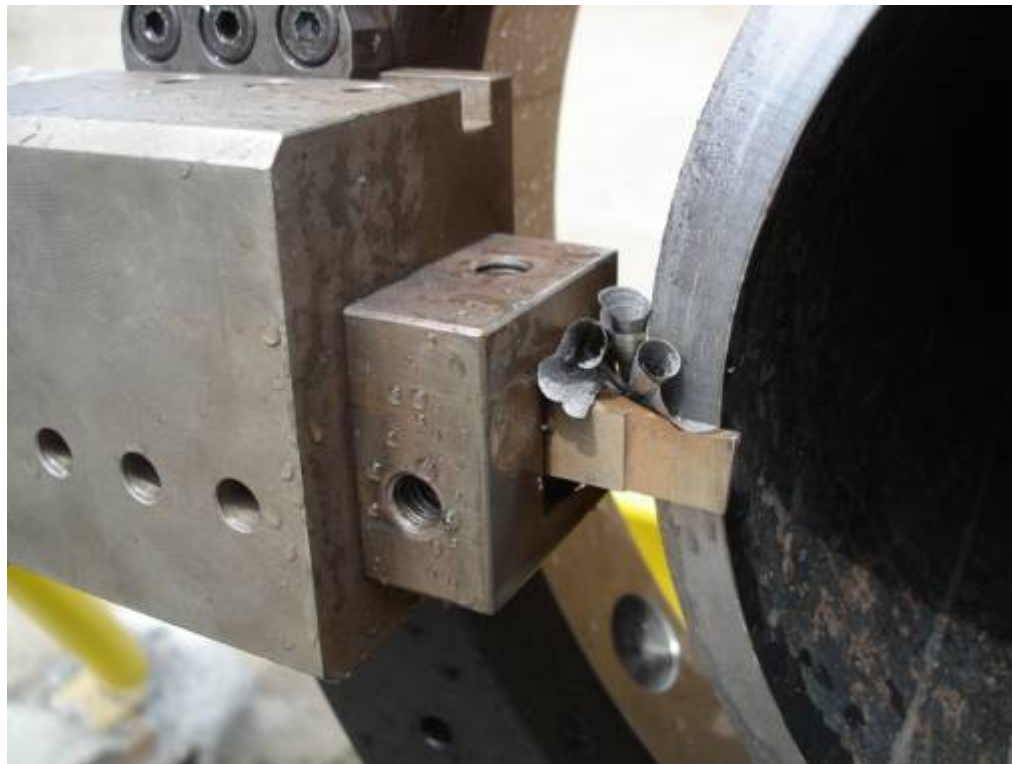
TNO Series

US600R

US Series

**TT Clamshells**

TT Clamshells





# PROTEM

A CUT ABOVE THE REST

## *PREFAB Range*

TT Clamshells

US-HSB Series

O-HSB-C

CTA Series

BB Series

TNO Series

US600R

US Series

**TT Clamshells**



Certification N° 667 E





# **PROTEM**

**A CUT ABOVE THE REST**

***PROTEM SAS***

***ZI les Bosses***

***26800 Etoile-sur-Rhône***

***France***

***Tel.: 0033 47557-4141***

***Fax: 0033 47557-4149***

***www.protem.fr***

***PROTEM GmbH***

***Am Hambiegel 27***

***76706 Dettenheim***

***Germany***

***Tel.: 0049 7247 9393-0***

***Fax: 0049 7247 9393-33***

***www.protem-gmbh.de***

Certification N° 667 E

